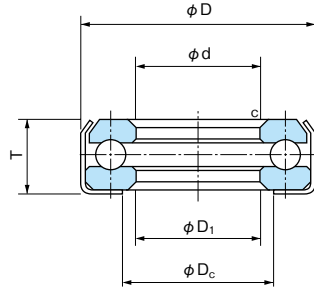


■ Extra Small and Miniature Thrust Ball Bearings

TG Type (Banded)
Bore Diameter: 5~8mm



1N=0.102kgf

Boundary dimensions (mm)						Bearing No.	Basic dynamic load rating C_a (N)	Basic static load rating C_{0a} (N)	Mass (kg) Reference
d	D	T	c	D ₁	D _c				
5	10	4.2	0.3	5.1	5.8	5TG-10	2200	2710	1.3
6	12	4.7	0.5	6.2	7.2	6TG-12	2450	3450	2.2
7	14	4.7	0.5	7.2	8.2	7TG-14	3320	4890	3.0
8	16	5.2	0.5	8.2	9.2	8TG-16	4750	6650	4.0