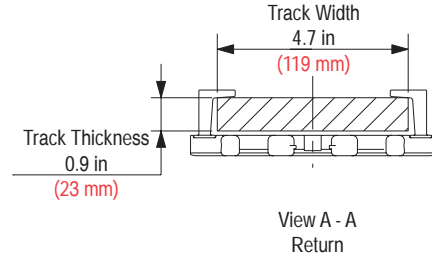
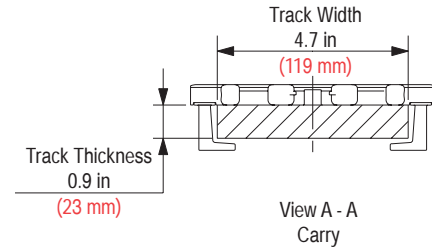
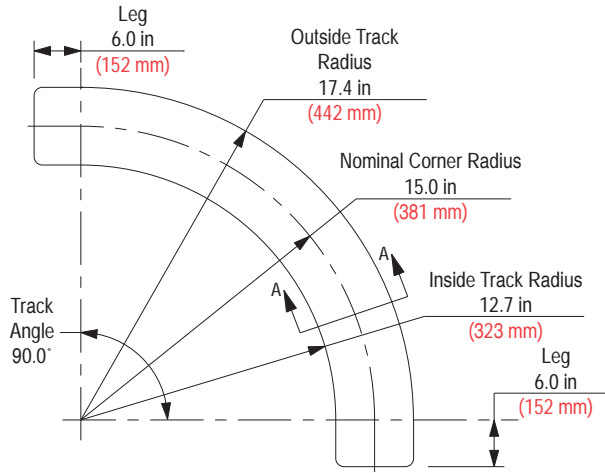


Corner Track (One Piece)

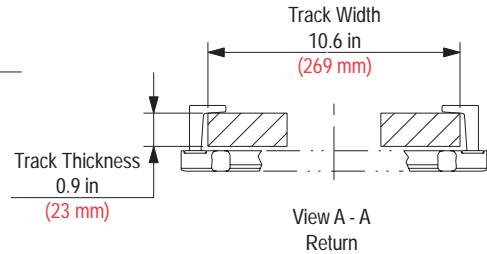
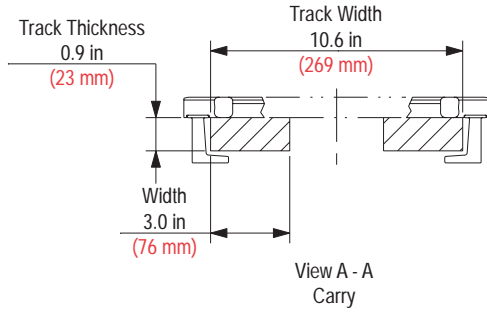
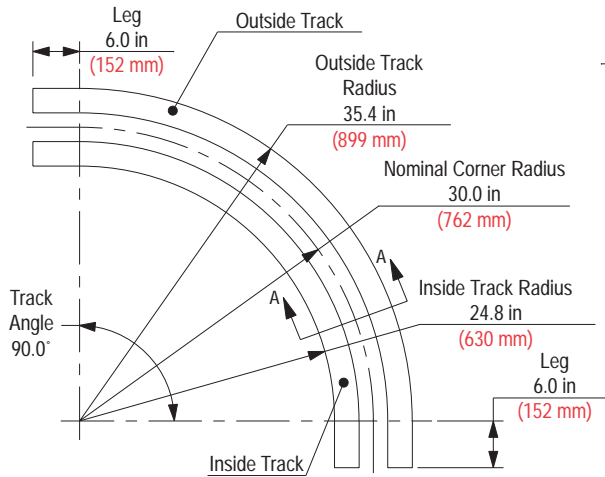


Corner Track Part Number	Corner Track Number	Chain Width		Material	Color	Approximate Weight	
		in	mm			lbs	kg
Carry							
114-3106-1	N15R7	6.00	152.4	Nylatron®	Black	4.09	1.86
Return							
114-3107-1	U15R7	6.00	152.4	UHMWPE	White	4.09	1.86

Nylatron is a registered trademark of Quadrant Engineering Plastics Products.

For 6 in (152.4 mm) chain only.

Corner Track (Two Piece)

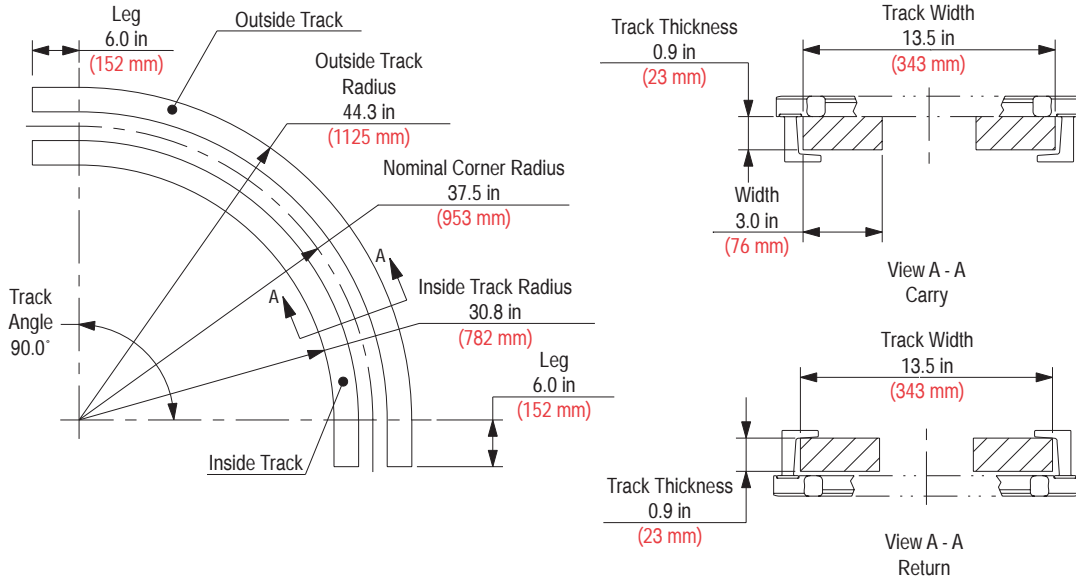


Corner Track Kit Number	Corner Track Part Number	Corner Track Number	Chain Width		Track Position	Material	Color	Approximate Weight	
			in	mm				lbs	kg
Carry									
614-482-1	114-4284-1	N30R7	12.00	304.8	Outside	Nylatron®	Black	6.10	2.77
	114-4285-2	U30R7	12.00	304.8	Inside	UHMWPE	White	4.20	1.91
Return									
614-483-1	114-4284-2	U30R7	12.00	304.8	Outside	UHMWPE	White	6.10	2.77
	114-4285-2	U30R7	12.00	304.8	Inside	UHMWPE	White	4.20	1.91

Nylatron is a registered trademark of Quadrant Engineering Plastics Products.

For 12 in (304.8 mm) chain only.

Corner Track (Two Piece)

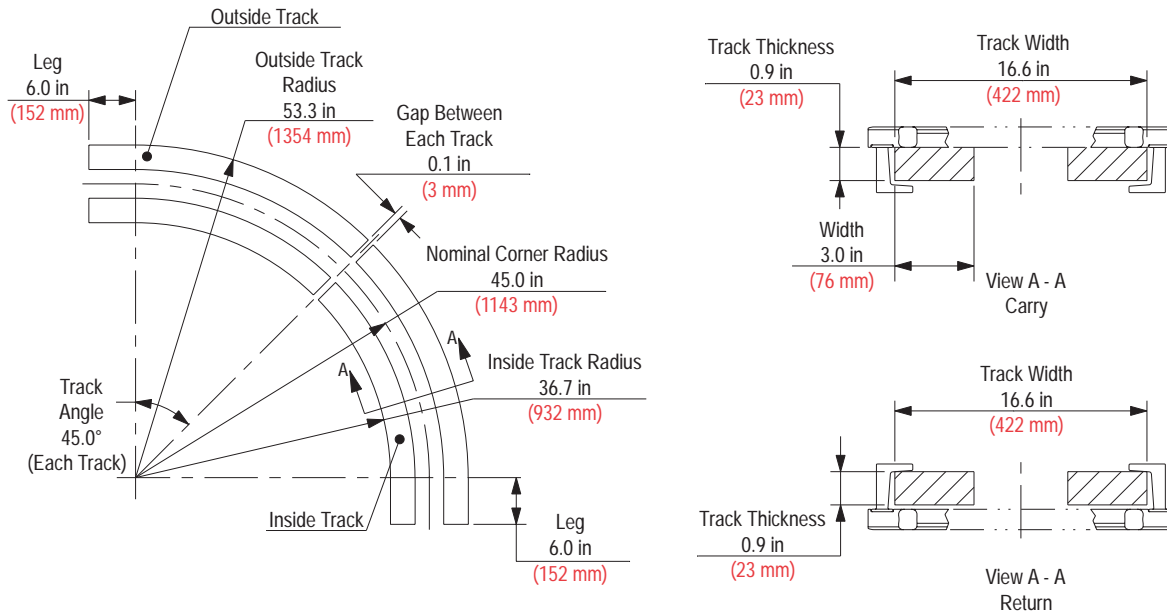


For 15 in (381.0 mm) chain only.

Corner Track Kit Number	Corner Track Part Number	Corner Track Number	Chain Width		Track Position	Material	Color	Approximate Weight	
			in	mm				lbs	kg
Carry									
614-202-1	114-3031-1	N37.5R7	15.00	381.0	Outside	Nylatron®	Black	7.53	3.42
	114-3007-1	U37.5R7	15.00	381.0	Inside	UHMWPE	White	5.20	2.36
Return									
614-203-1	114-3008-1	U37.5R7	15.00	381.0	Outside	UHMWPE	White	7.53	3.42
	114-3007-1	U37.5R7	15.00	381.0	Inside	UHMWPE	White	5.20	2.36

Nylatron is a registered trademark of Quadrant Engineering Plastics Products.

Corner Track (Four Piece)

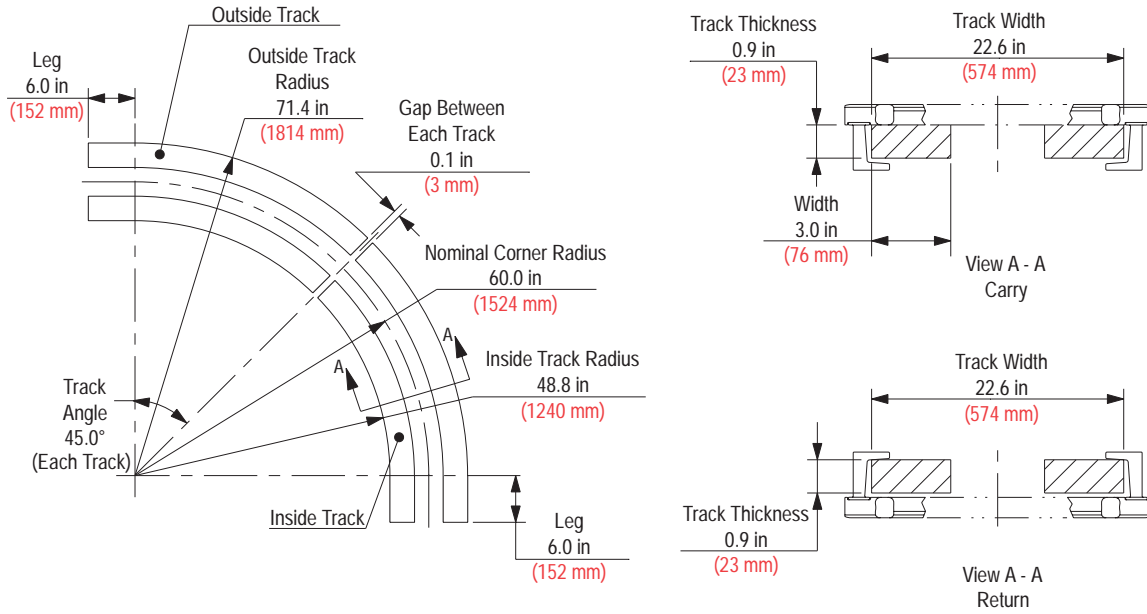


For 18 in (457.2 mm) chain only.

Corner Track Kit Number	Corner Track Part Number	Corner Track Number	Chain Width		Track Position	Material	Color	Approximate Weight	
			in	mm				lbs	kg
Carry									
614-377-1	114-3571-1	N45R7	18.00	457.2	Outside	Nylatron®	Black	10.54	4.78
	114-3570-1	U45R7	18.00	457.2	Inside	UHMWPE	White	6.32	2.87
Return									
614-378-1	114-3572-1	U45R7	18.00	457.2	Outside	UHMWPE	White	10.54	4.78
	114-3570-1	U45R7	18.00	457.2	Inside	UHMWPE	White	6.32	2.87

Nylatron is a registered trademark of Quadrant Engineering Plastics Products.

Corner Track (Four Piece)

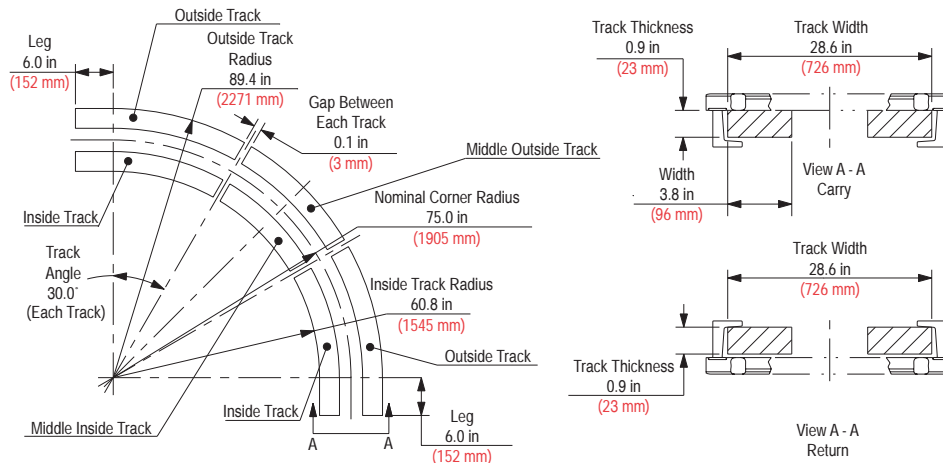


For 24 in (609.6 mm) chain only.

Corner Track Kit Number	Corner Track Part Number	Corner Track Number	Chain Width		Track Position	Material	Color	Approximate Weight	
			in	mm				lbs	kg
Carry									
614-296-1	114-3392-1	N60R7	24.00	609.6	Outside	Nylatron®	Black	12.12	5.50
	114-3390-1	U60R7	24.00	609.6	Inside	UHMWPE	White	8.28	3.76
Return									
614-297-1	114-3391-1	U60R7	24.00	609.6	Outside	UHMWPE	White	12.12	5.50
	114-3390-1	U60R7	24.00	609.6	Inside	UHMWPE	White	8.28	3.76

Nylatron is a registered trademark of Quadrant Engineering Plastics Products.

Corner Track (Six Piece)



For 30 in (762.0 mm) chain only.

Corner Track Kit Number	Quantity	Corner Track Part Number	Corner Track Number	Chain Width		Track Position	Material	Color	Approximate Weight	
				in	mm				lbs	kg
Carry										
614-404-1	2	114-4012-1	N75R7	30.00	762.0	Outside	Nylatron®	Black	14.22	6.45
	1	114-4013-1	N75R7	30.00	762.0	Middle Outside	Nylatron®	Black	5.92	2.68
	2	114-4016-2	U75R7	30.00	762.0	Inside	UHMWPE	White	8.68	3.94
	1	114-4019-2	U75R7	30.00	762.0	Middle Inside	UHMWPE	White	3.37	1.53
Return										
614-405-1	2	114-4012-2	U75R7	30.00	762.0	Outside	UHMWPE	White	11.54	5.23
	1	114-4013-2	U75R7	30.00	762.0	Middle Outside	UHMWPE	White	4.80	2.18
	2	114-4016-2	U75R7	30.00	762.0	Inside	UHMWPE	White	8.68	3.94
	1	114-4019-2	U75R7	30.00	762.0	Middle Inside	UHMWPE	White	3.37	1.53

Nylatron is a registered trademark of Quadrant Engineering Plastics Products.