

Product Code & Pack Size Ordering Information

Grease Products	Catridge	2.5kg	20kg	18kg	Other
Molybond Opal Hi-Load	RK353857	RK353872	RK353887	RK353892	
Molybond Opal Pin & Bush	RL355957		RL355987		
Molybond Opal Tufgear			RY460621		RY460610 (C)
Rocol Sapphire Aqua	RY424031				
Rocol Sapphire Foodlube	RY515330	RY515331	RY515332		
Rocol Sapphire Hi-Temp	RY424001		RY424002		
Rocol Sapphire Silicone	RY421515 (T)	RY421520			RY421510 (P)
Rocol Sapphire Ultraplex	RY424851	RY424853	RY424854		

(C) - Denotes 950g Jumbo Cartridge

(T) - Denotes 120g Tube

(P) - Denotes 500g Pot

AUSTRALIA
ITW Polymers & Fluids
100 Hassall Street
Wetherill Park NSW 2164
Toll Free Phone: 1800 063 511
Toll Free Fax: 1800 803 596

NEW ZEALAND
ITW Polymers & Fluids
UNIT 2, 38 Trugood Drive
East Tamaki, Auckland
Toll Free Phone: 0800 476 265
Fax: 09 273 6489

Website: www.rocol.com.au

Distributor:



ROCOL®

Sapphire

MOLYBOND®
Specialised Lubricants

Opal

BEARING & OPEN GEAR GREASES

**Premium High Performance Greases
 Built To Outperform In All Industries**

- | General Purpose
- | High Load
- | High Temperature
- | Water Resistant
- | Food Industry
- | Open Gear
- | Ancillary Products

**Creating Lubricants
 With Industry™**

In today's competitive world where plant and equipment must work longer and harder than ever before, availability and reliability are critical. Rocol Sapphire and Molybond Opal specialised bearing greases have been developed to suit Australian conditions and to exceed the requirements of the world's major equipment manufacturers.

The Rocol Sapphire grease range was developed to significantly reduce the frequency of lubrication and offer cost savings through reduced consumption over a wide range of applications, whilst still providing the benefits of reduced wear, wide temperature range and good chemical, water and load resistance.

The Molybond Opal grease range is fortified with molybdenum disulphide, a lubricating solid that offers exceptional performance in highly loaded, shock loaded and high wear applications, whilst also extending lubrication intervals to provide cost savings.

With over 50 years in Australian industry, experience has shown that the use of Rocol Sapphire and Molybond Opal specialised bearing greases result in reduce wear, prolonged plant and equipment life, increased service intervals as well as lower power and lubricant consumption, which all add up to reduced maintenance and replacement costs.

For long term protection of your assets call for a Rocol Sapphire or Molybond Opal specialised bearing grease today. Toll Free 1800 063 511.

Bearing Greases

Rocol Sapphire Ultraplex

A general purpose bearing grease used for complete plant lubrication in wet, dusty and harsh environments.

This lithium complex NLGI #2 grease is suitable for use in applications such as electric motors, conveyor rollers and pump bearings.

NZ MAF Approved C13 (Fish Game Meat)



Molybond Opal Hi-Load

A superior lithium based bearing grease containing molybdenum disulphide for applications where a high quality multi-purpose grease is required.

This NLGI #2 grease is formulated to provide excellent load carrying, superior wear protection and exceptional resistance to water washout.

Suitable where rationalisation to one product is desired for both anti-friction and plain bearings.

NZ MAF Approved C13 (Fish Game Meat)



Grease Compatibility Chart

Technically, grease consists of mineral oil or synthetic base fluid which has been thickened by the addition of soap, i.e. lithium, lithium complex, calcium etc or an inert powder such as clay or silica. Not all grease thickening systems are compatible and therefore not all greases can be mixed. The following table indicates which type of greases are compatible and can be used together and which types are incompatible and therefore must not be mixed.

Compatibility With	Calcium	Calcium Complex	Calcium Hydroxys-tearate	Aluminium Complex	Lithium	Lithium Complex	Clay	Polymer	Polyurea	Sodium
Calcium	C	I	C	I	B	C	C	C	I	I
Calcium Complex	I	C	B	I	I	B	I	C	C	I
Aluminium Complex	I	I	C	C	I	C	I	C	I	I
Lithium	B	I	C	I	C	C	I	C	I	I
Lithium Complex	C	B	C	C	C	C	I	C	I	I
Clay	C	I	C	I	I	I	C	C	I	I
Polymer	C	C	C	C	C	C	C	C	C	C
Sodium	I	I	I	I	I	C	I	C	I	C

C - Compatible I - Incompatible B - Borderline

Note: Additives may give rise to incompatibility between greases that are normally compatible

Precautions

Wherever possible re-lubricate with grease containing the same thickening system.

Otherwise select a grease type which is compatible with the existing grease. Thickeners of different fibrous structures may lead to premature bearing/equipment damage.

It is recommended that when a grease is being replaced by a different grease type, the bearings and grease ways are cleaned and repacked.

If it is not possible to clean the bearings, the following procedure should be adopted:

- n Re-lubrication must be carried out at more frequent intervals until the new grease has completely supplemented the old.
- n As a guide, halve the normal interval between re-lubrication for the next 3 to 4 applications.

For more detailed information and Material Safety Data Sheets on the Molybond Opal and Rocol Sapphire product range please visit our websites at:

- www.itwpolymersandfluids.com.au
- www.molybond.com.au
- www.rocol.com.au



Bearing & Open Gear Greases

Molybond Opal Pin & Bush

A tenacious, non bitumastic lithium based grease containing molybdenum disulphide and high grade graphite to enhance anti-wear characteristics.

This NLGI #1.5 heavy duty open gear and plain bearing grease is easily applied through automatic lubrication systems and leaves a transparent film which allows for easy gear inspection.

Its exceptional load carrying, water wash out resistance and adhesive properties make it ideal as a one off product on mining and earthmoving equipment.

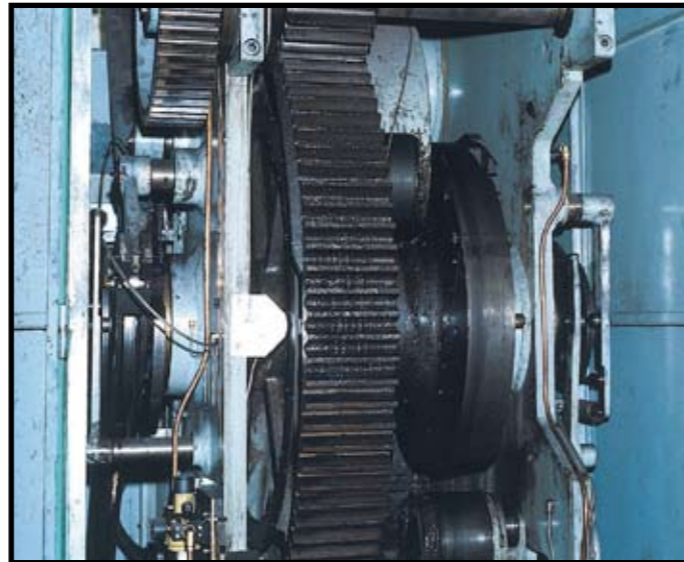


Molybond Opal Tufgear

A heavy duty clay based flexible open gear grease containing molybdenum disulphide, offering exceptional load carrying and wear resistance.

This NLGI #2 grease is ideal for dockyard, mobile or overhead cranes and can be applied by spatula or from a convenient jumbo sized cartridge.

It has excellent resistance to many chemicals which makes it effective for lubricating open gears found in tanneries or similar industries.



Ancillary Products

Molybond GH101

A heavy duty lithium hydroxy stearate open gear grease containing molybdenum disulphide and a blend of additives to enhance anti-wear and overall load carrying characteristics.

This product is suitable for use on high speed ball mill gears, sugar mill gears and winch gears and can be applied manually or through automatic lubrication systems.

Rocol Open Gear Spray

An open gear compound containing molybdenum disulphide in a convenient aerosol spray can.

Ideal for areas that are hard to grease by normal methods. It produces a semi-hard film that will not throw off and is suitable for use in wet, dry and dusty environments.

Bearing Greases

Rocol Sapphire Hi-Temp

This NLGI #2 grease is designed to effectively lubricate ball, roller and plain bearings operating at high temperatures. Because it is a synthetic oil based grease, it will not carbonise at elevated temperatures, therefore keeping the bearing free of abrasive residue.

Excellent for overhead conveyor bearings on powder coating lines. Suitable for highly loaded or corrosive environments with a wide temperature range of -40°C to +200°C.

NZ MAF Approved C11 (Fish Game Meat) and Dairy Industry, Food Areas (No Contact).



Rocol Sapphire Foodlube

A synthetic hydrocarbon based grease thickened with aluminium complex soap to NLGI #2, containing both solid lubricants and chemical (EP) additives for improved load carrying, anti-wear and water washout properties.

This white tenacious, non-toxic bearing grease is designed for the effective lubrication and protection of ball, roller and plain bearings operating in food and other clean industries.

Rocol Sapphire Foodlube has a wide temperature range of -50°C to 160°C.

NZ MAF Approved C15 (Fish Game Meat).



Rocol Sapphire Silicone (MX22)

A clear silicone based, non-melting NLGI #3 grease. It is suitable for long term lubrication at extreme temperatures. Highly resistant to chemicals, oils and gases and suitable as an electrical insulating or filling compound.

Ideal for rubber seals and 'o' rings and on tapware for potable water. It will not affect most plastics or rubbers and offers excellent high temperature resistance. Also suitable for low speed bearings.

NZ MAF Approved C15 (Fish Game Meat).

Rocol Sapphire Aqua

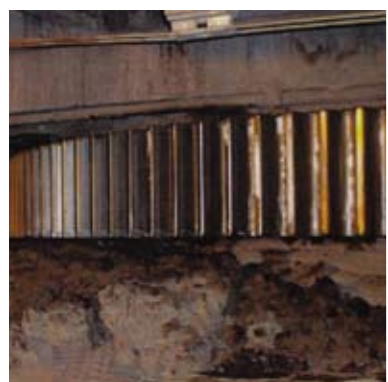
A modified lithium stearate based NLGI #2 long life, water resistant bearing grease. Designed for the effective lubrication and protection of plant and equipment exposed to wet conditions.

This product is ideal for ball and roller or plain bearings found in water pumps, washeries, boat winches and boat trailer wheel bearings exposed to either salt or fresh water.

NZ MAF Approved C13 (Fish Game Meat)



Bearing & Open Gear Grease Selection Guide



COLOUR & NAME	OPAL TUFGEAR	OPAL PIN & BUSH	OPAL HI-LOAD	SAPPHIRE ULTRAPLEX	SAPPHIRE HI-TEMP	SAPPHIRE AQUA	SAPPHIRE FOODLUBE	SAPPHIRE SILICONE
Consistency (NLGI CLASS)	2	1½	2	2	2	2	2	3
Thickeners	Clay	Lithium	Lithium	Lithium Complex	Lithium Complex	Modified Lithium Stearate	Aluminium Complex	Silica
Base Oil	Mineral	Mineral	Mineral	Mineral	Synthetic	Mineral	Synthetic	Synthetic
Operating Temperature	-5°C to 100 °C	-10°C to 150°C	-30°C to 180°C	-30°C to 180°C	-40°C to 200°C	-30°C to 180°C	-50°C to 160°C	-40°C to 260°C
Water Resistance	Excellent	Good	Excellent	Good	Good	Excellent	Good	Excellent
Load Carrying Capacity (4 Ball Weld Load - kg)	800 kg	800 kg	550 kg	400 kg	200 kg	400 kg	620 kg	Not Applicable
Food Approval	No	No	No	No	No	No	Yes	Yes
MAF Approval Rating	Not Applicable	Not Applicable	C13	C13	C11	C13	C15	C15
Applications								Suitable for 'O' rings, polymeric bearings, slides and is excellent for bearings exposed to chemicals
Speed ↑								
Load ↓								
Electric Motors								
Pump Bearings								
Conveyors								
Pin & Bushes								
Earth Moving								
Open Gears								
PACK SIZES	950g 20kg	450g 20kg 180kg	450g 2.5kg 20kg 180kg	450g 2.5kg 20kg 180kg	400g 20kg	450g	400g 18kg 2kg	120g 500g 2.5kg

If further information is required consult our website at www.rocol.com.au or phone our Technical Department Toll Free on (Australia) 1800 063 511 (NZ) 0800 476 265